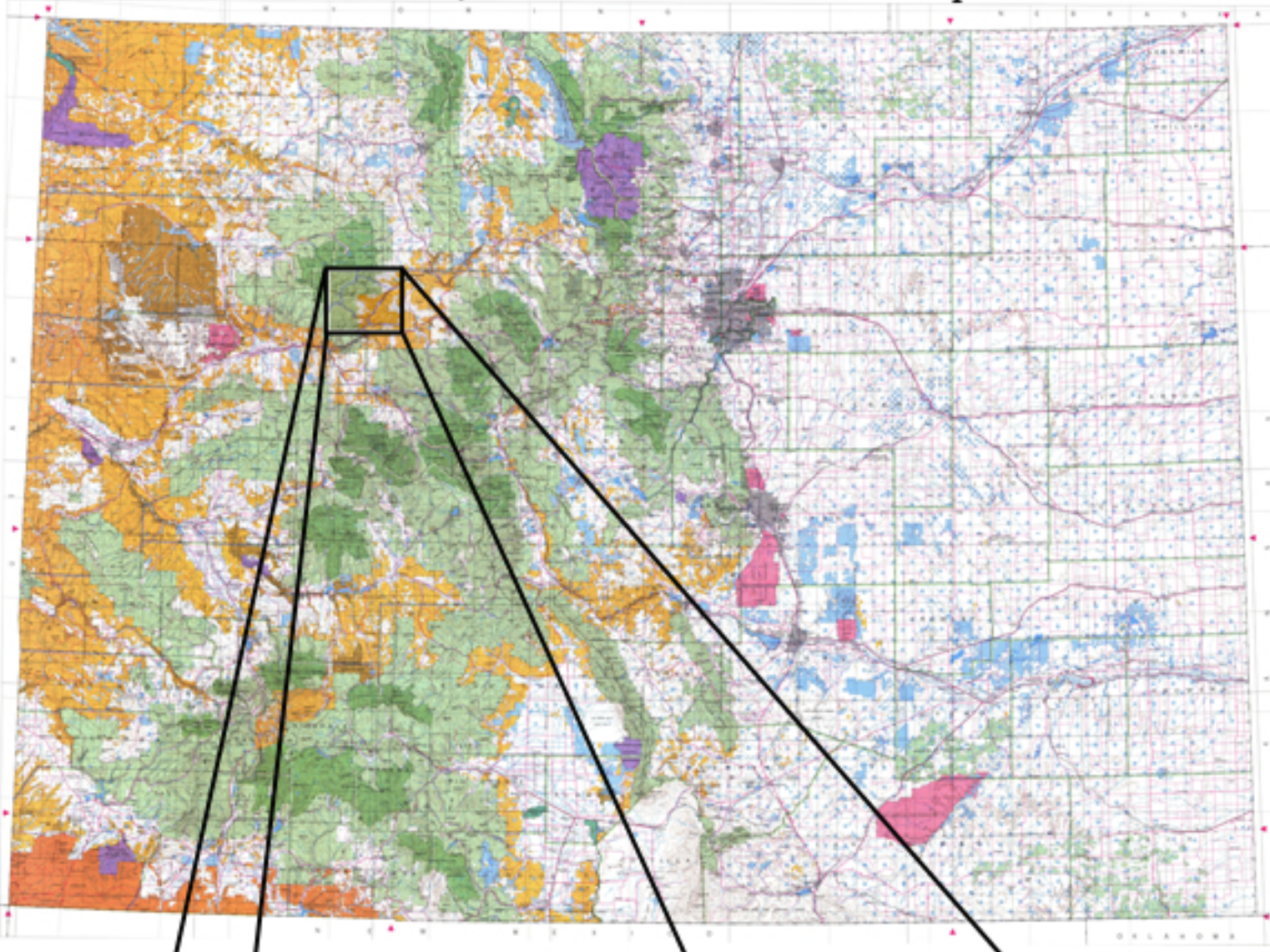


Our printed maps are the best on the market. From our 1:500,000 BLM Map for the Den to individual unit maps with Elk Concentration or BLM Land Ownership Data.

In the Spring of 2010 we'll be introducing our "Center-Point" 7.5 minute maps. These are the most detailed maps available. Give us your "Center Point" and we'll build a map around it covering 12 miles by 8 miles at the most detailed scale available. We'll project GMU boundaries on all the maps and add Elk, Deer, or Antelope Concentration Data. When you order a printed map we'll also email a 3D digital image to you for use in Google Earth. This combination creates an unmatched hunting tool. We'll show you "Where to Hunt".

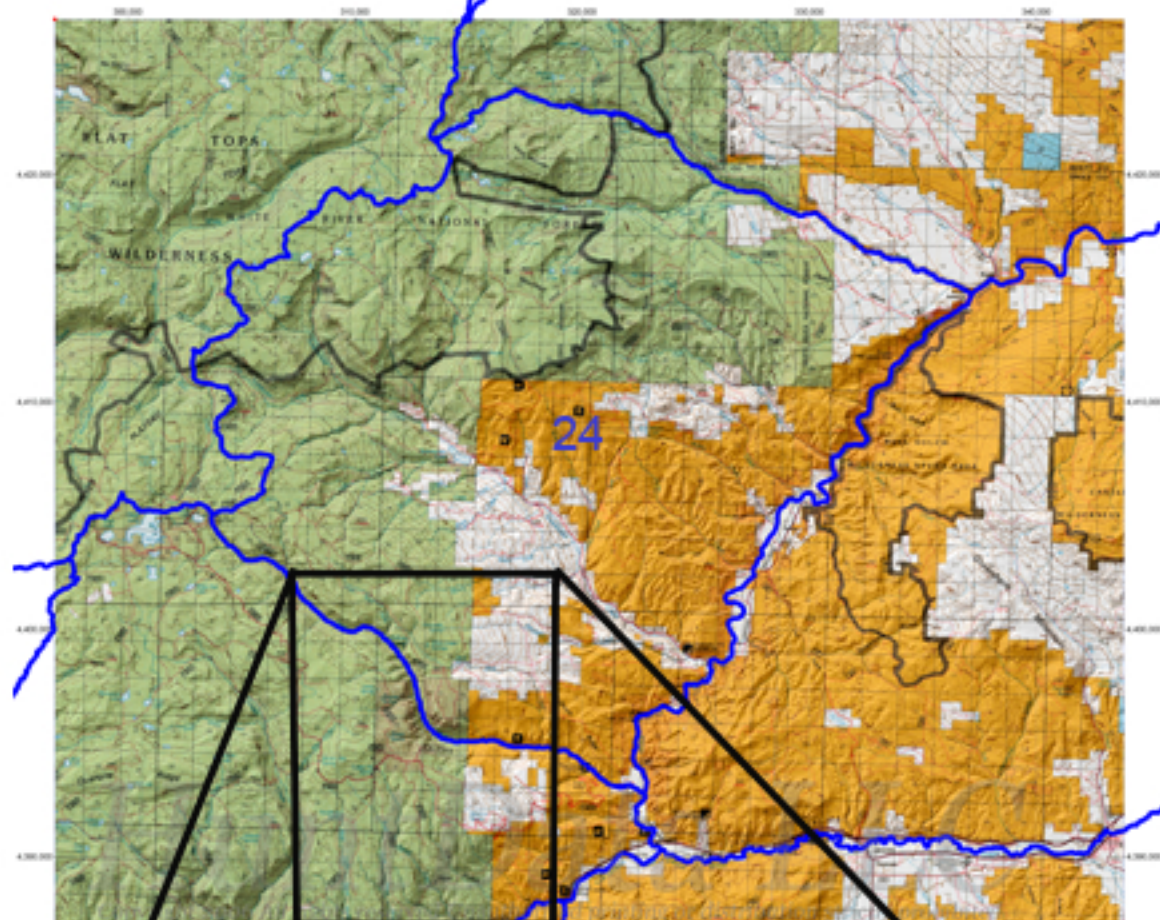
1:500,000 Scale Statewide BLM Map



This is our 1:500,000 Statewide Land Ownership Map. As you can see, it covers the whole State. On BigGameCD 70 these maps are built in.

You can also purchase a printed version of this map. It would make a great wall hanger for the den.

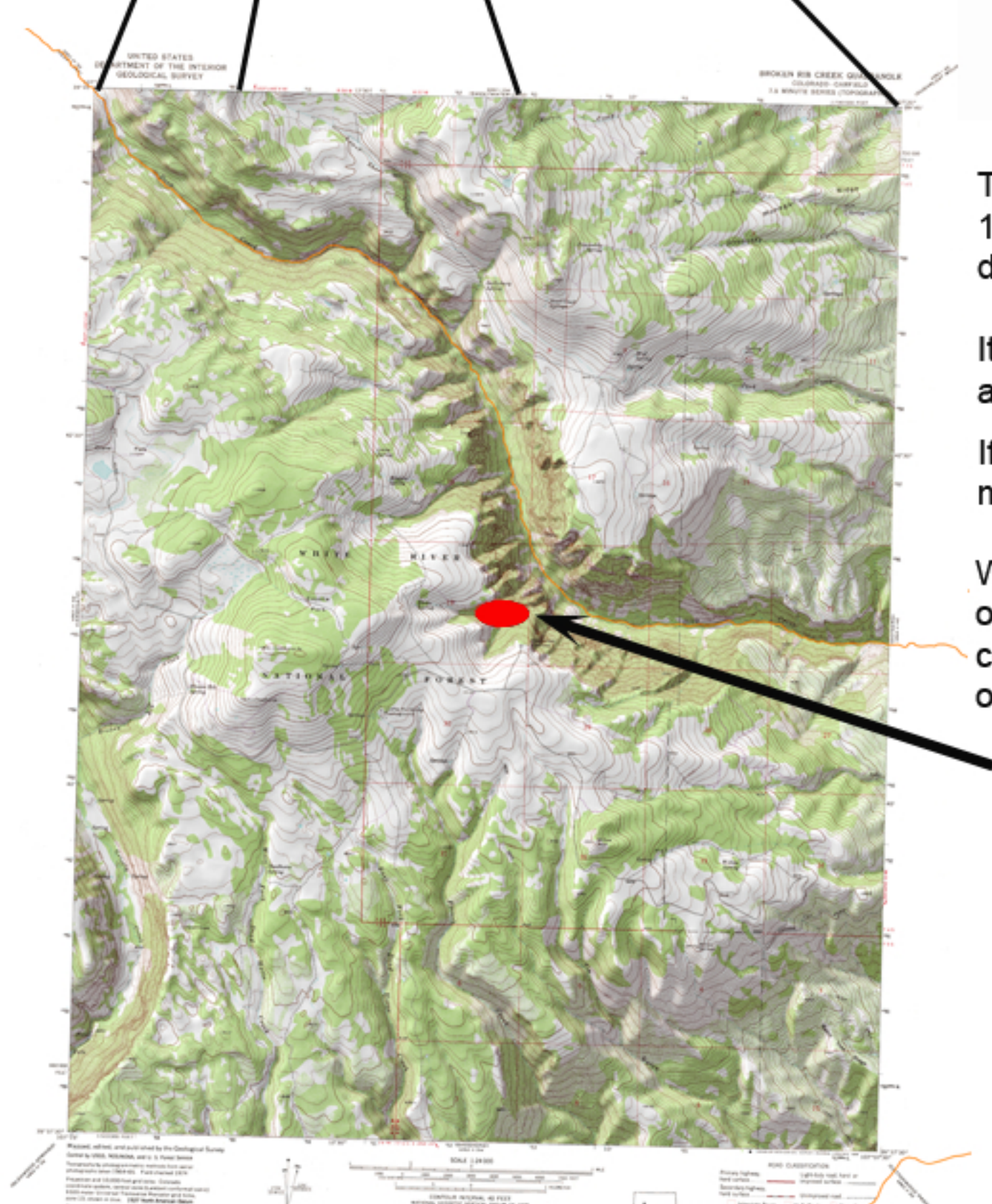
1:100,000 Scale BLM Unit Map



The 1:100,000 BLM maps are our biggest seller. In addition to the unit boundaries, the maps show national forest (green), BLM (gold), and private land (white) in the unit.

This is the map to take hunting.

In addition to the BLM version, we also have our Elk Concentration & Migration route maps. See below for a sample.



The 7.5 minute (1:24,000 or 1:25,000) maps are the most detailed maps available.

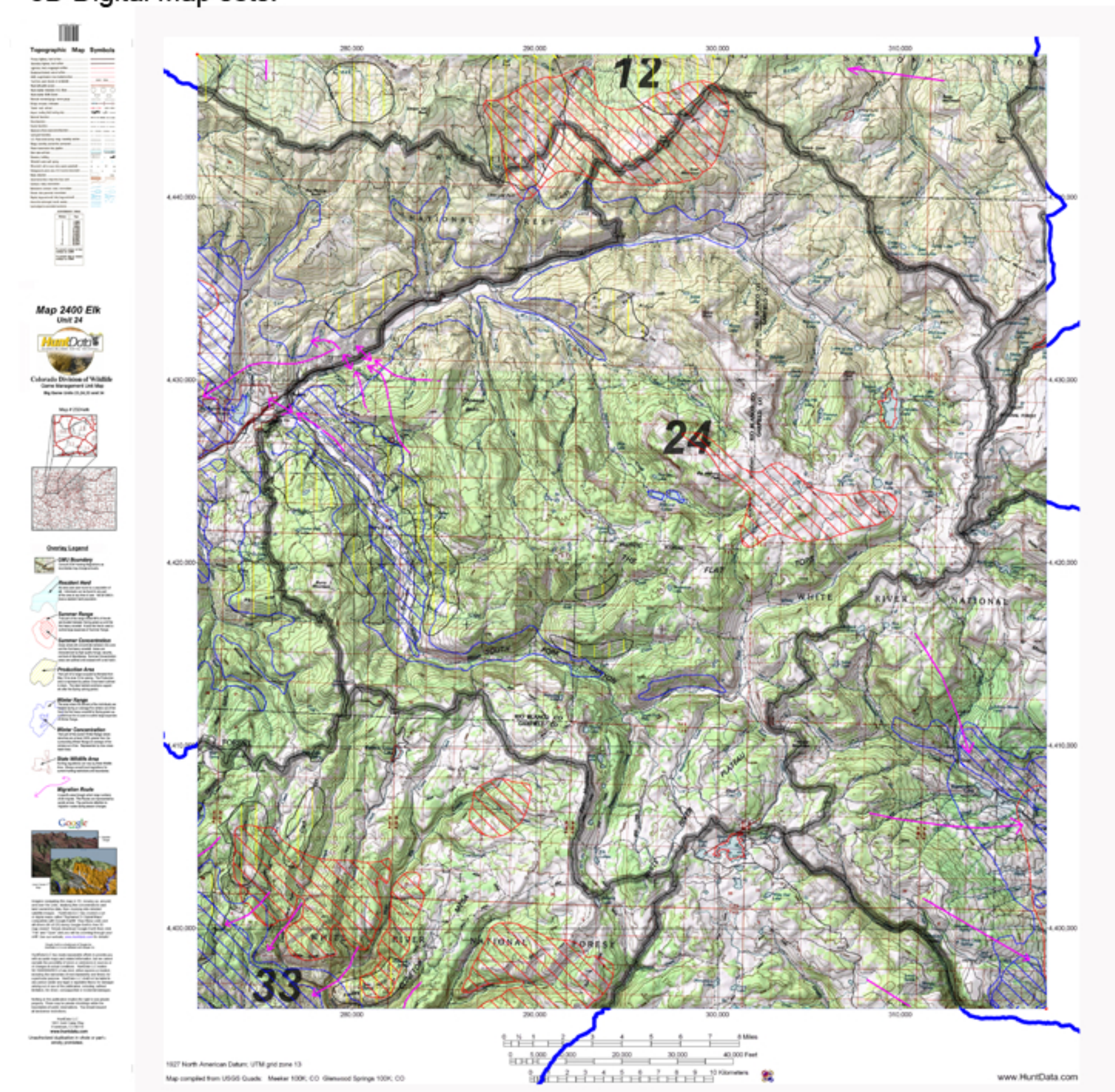
It takes an armful of maps to cover a unit.

If you want a 7.5 minute hunting map, then your in the right place.

We project the elk, deer, moose, or antelope unit boundary, concentration and migration data onto the 7.5 minute base map.

Give us your Lat/Long or UTM coordinates and we'll generate a 7.5 minute topo map, 12 miles by 8 miles. We'll print it, email a 3D image or send them both to you. These maps are the best!

Below is an example of our Elk Concentration Map. We overlay the unit boundaries on a USGS topographical map. We add Elk Migration Routes, Summer Concentration, and Winter Concentration Data. These maps are great for the do-it-yourself, find-it-yourself hunter. We can print them or send you a digital copy in one of our 3D Digital Map sets.



We offer all of these maps in a 3D Digital version. Our customer's favorite activity is to display the 3D map in Google Earth next to a printed version of the map. They transfer specific coordinates and notes about the terrain onto the map they take into the field.