

This is the ultimate "office scouting tool". Learn new info about your unit before you set out on foot. Explore ridges you've never been able to climb. Study the ground cover in the summer ranges, find the public land in the winter ranges. Study road systems and access points. Explore like never before. Download Google Earth's free 3D mapping tool, overlay our maps and start exploring!

Print 3D maps with concentration areas. The map sets contain a complete, full-size digital copy of 4 maps for each unit in the set. Read more below.



Statewide Set  
4 Maps for EVERY unit W of I25

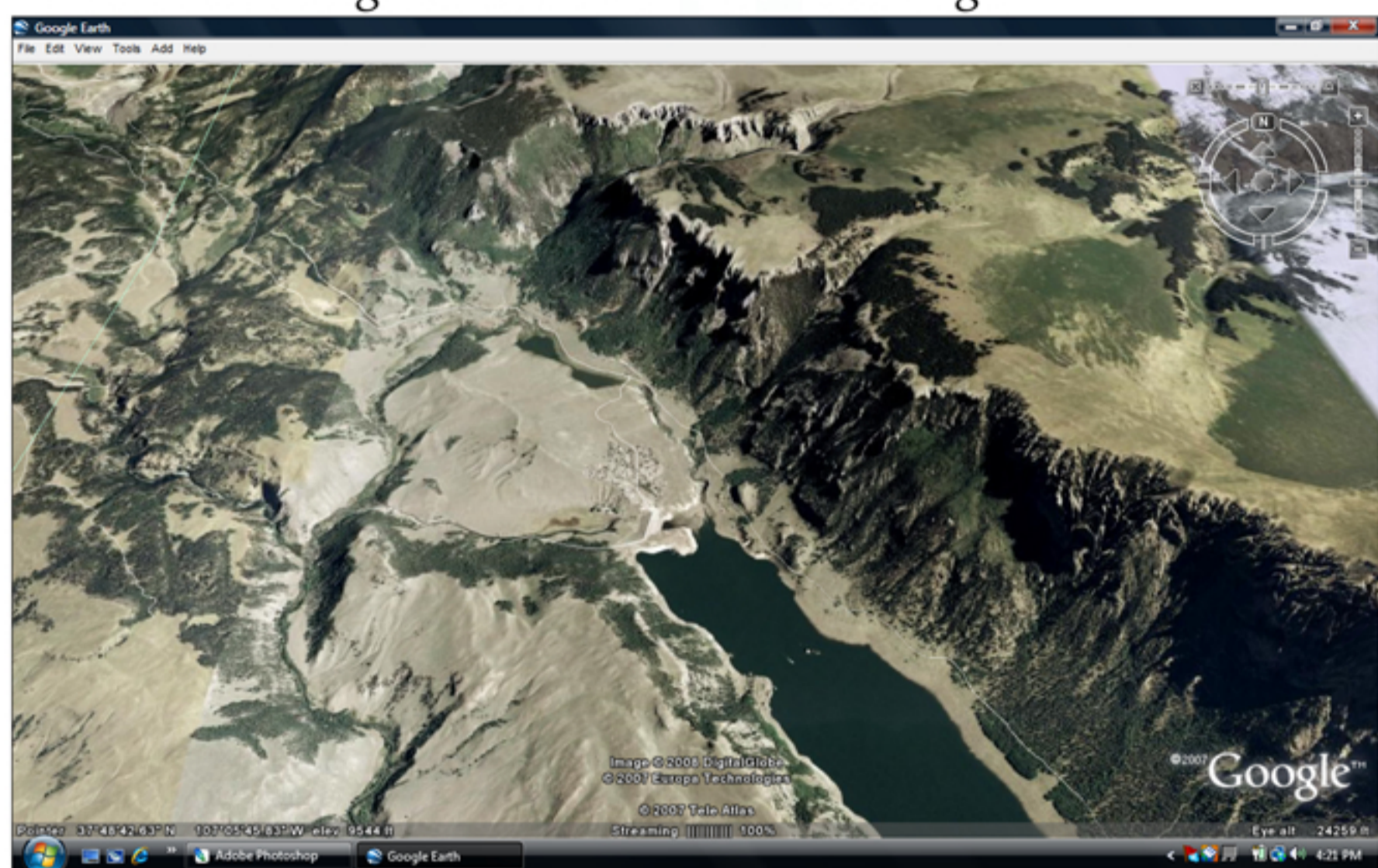
# Explore Colorado in 3D using our Digital Hunting Maps

in Google Earth

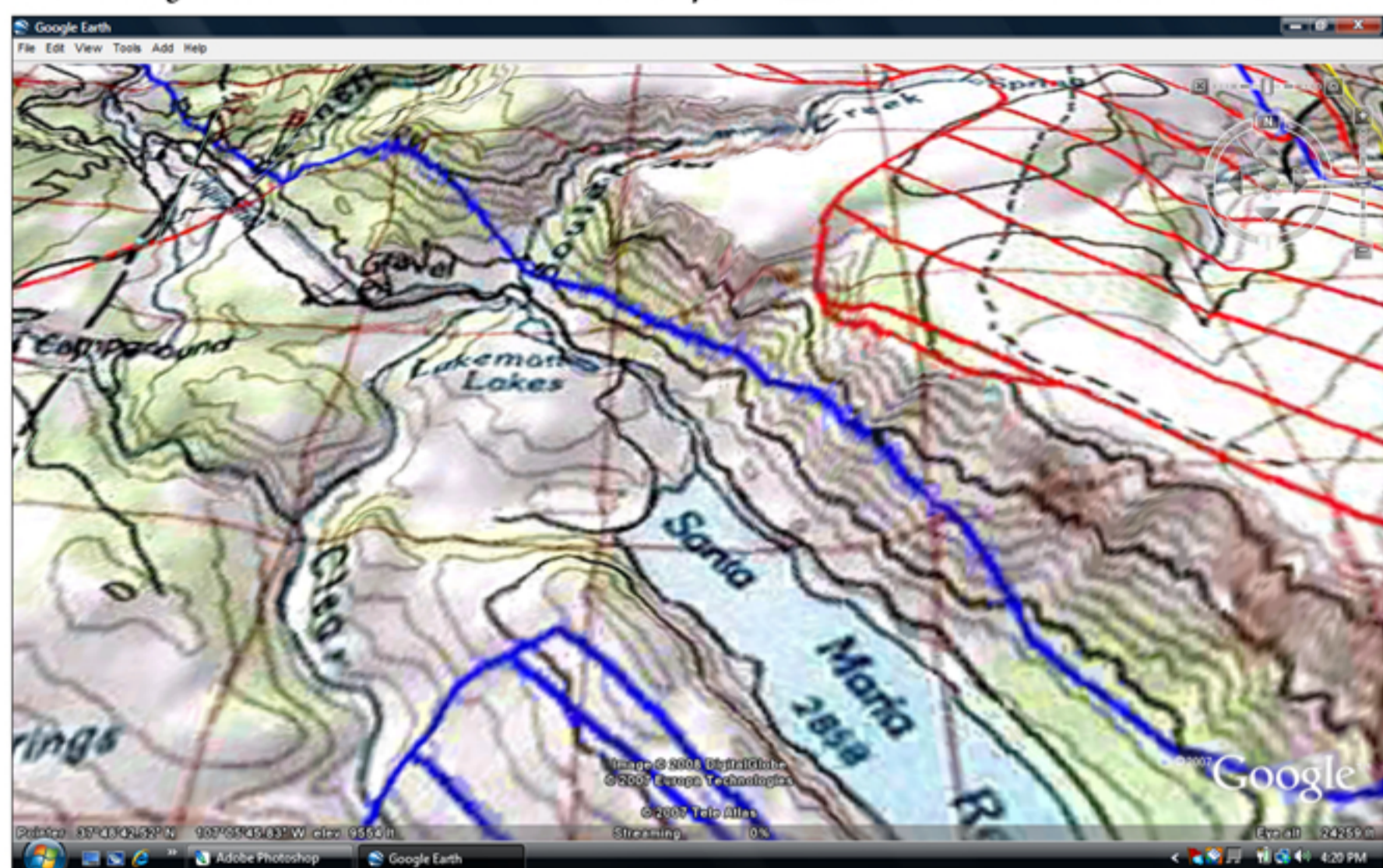
Mac!

Statewide or  
1 of 4 Regions

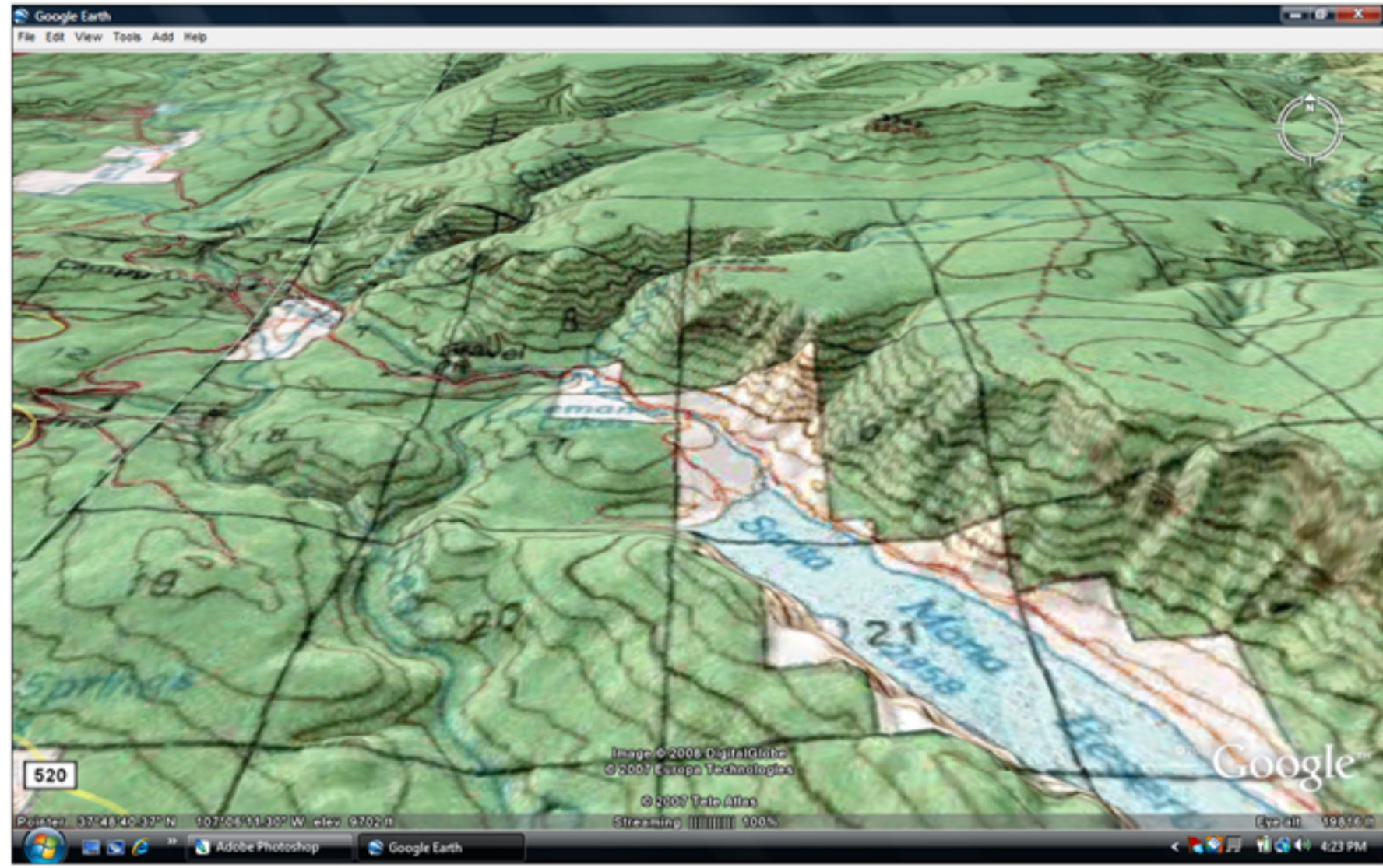
Start with Google Earth's 3D Satellite Images



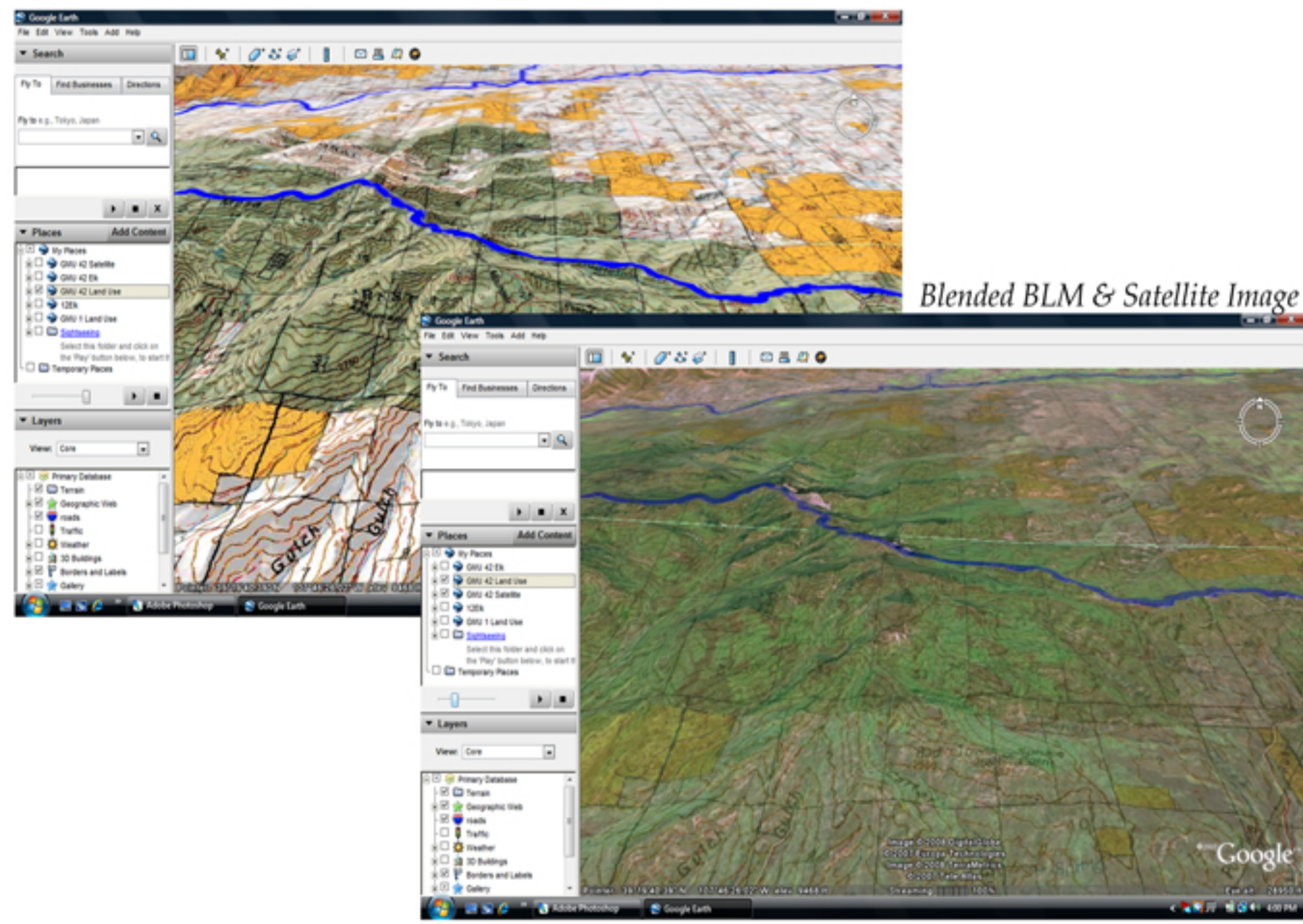
Overlay our Concentration Map to see where the elk are



Overlay our BLM Maps to find the Public Land



Then, blend the maps together to create your own scouting map!



Google Earth is a free download from [earth.google.com](http://earth.google.com). An Internet Connection is required for Google Earth.

Digital Maps Include:  
\* Elk Concentration,  
\* Land Ownership,  
\* USGS Topo, and  
\* NASA Satellite Maps  
4 Maps for Every Unit!  
Over 25 gb of maps!



Northwest



Central



Southwest

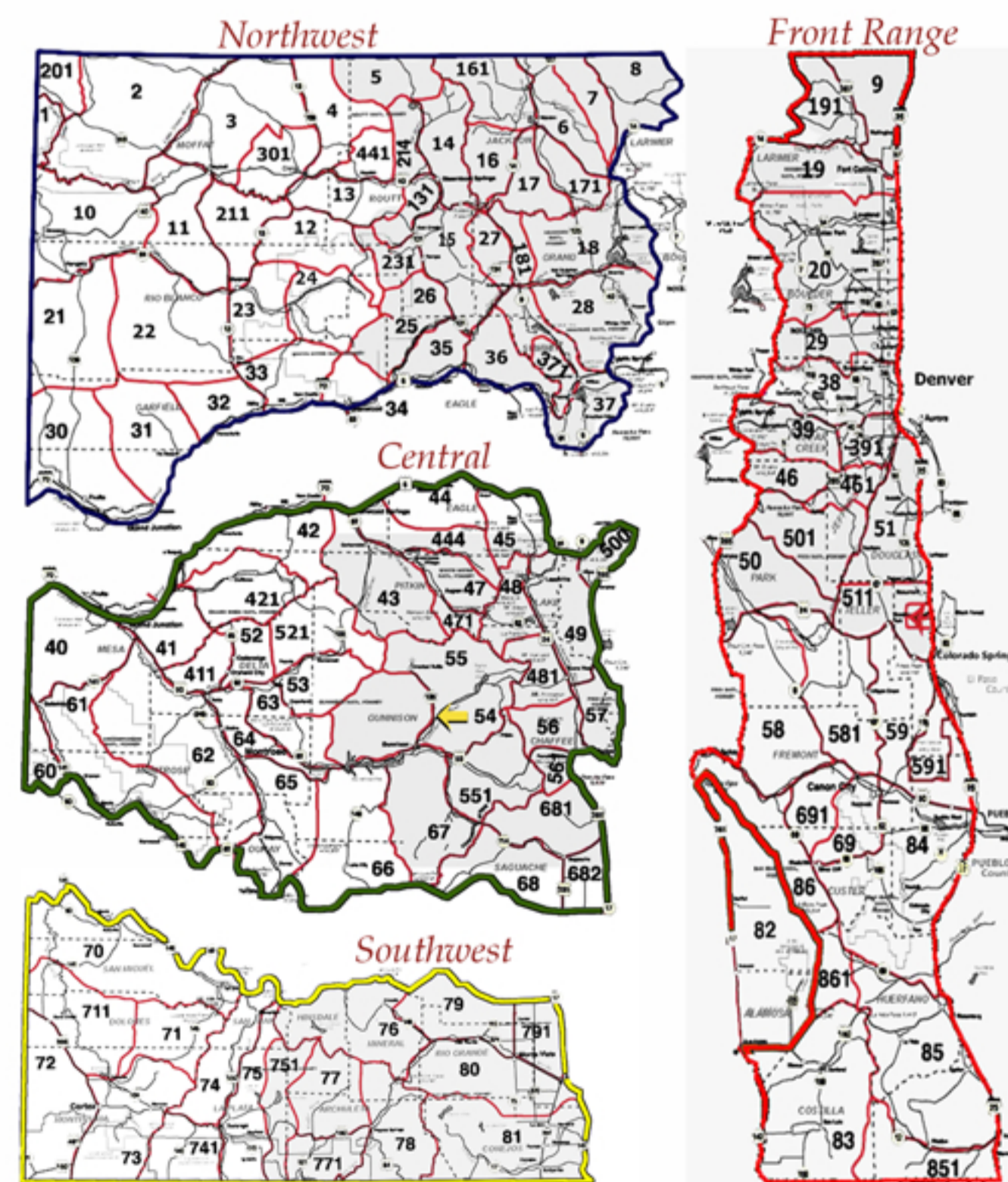


Front Range

Digital Maps work on Windows or a Mac!

Google Earth is a trademark of Google Inc. Huntdata is not associated with Google Inc.

## Regional GMU Coverage



Add the Digital Map Set to BigGameCd 7.0 and project migration routes and concentration areas onto 1:100,000 BLM, Topo, and Nasa Satellite Images!

BigGameCd 7.0



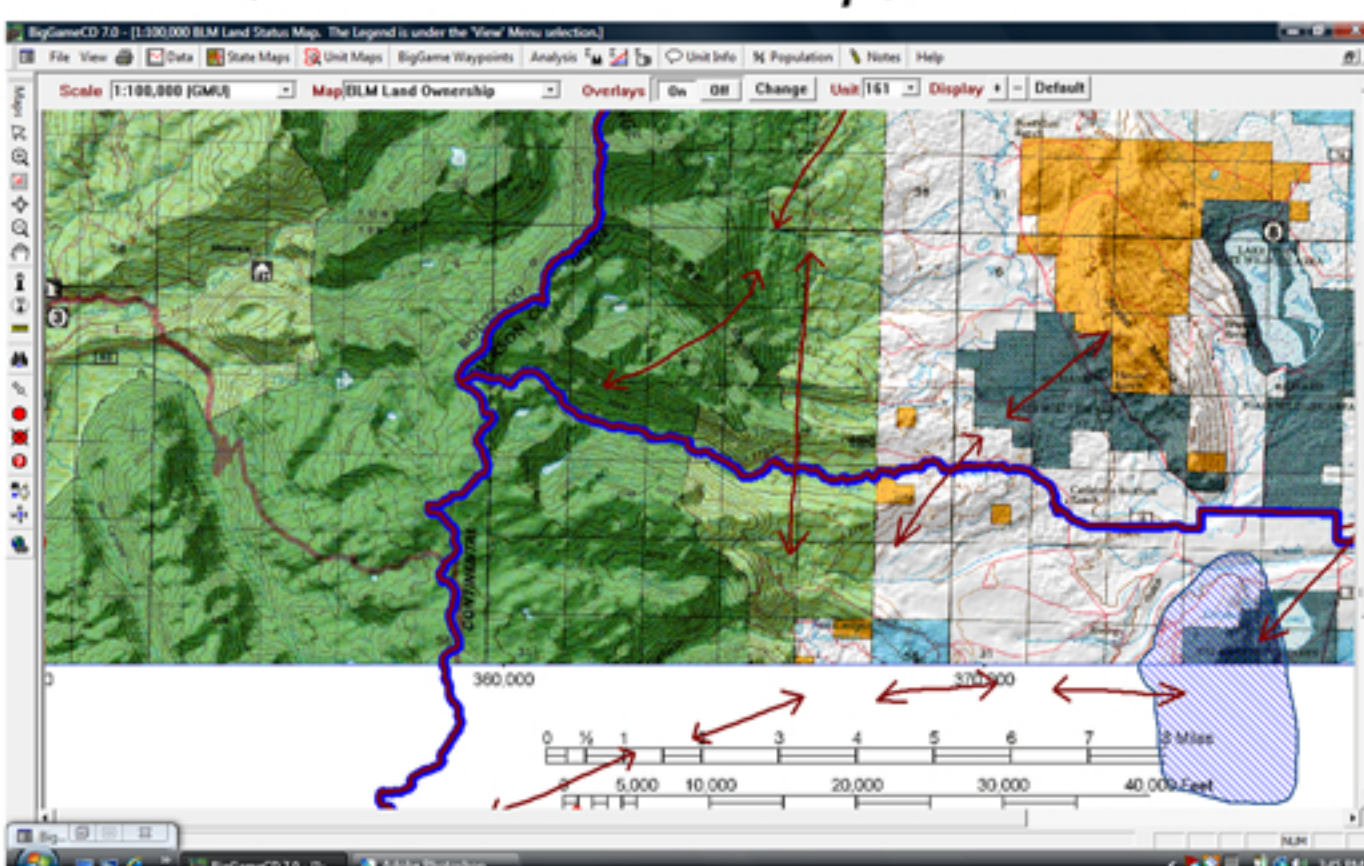
Digital Maps



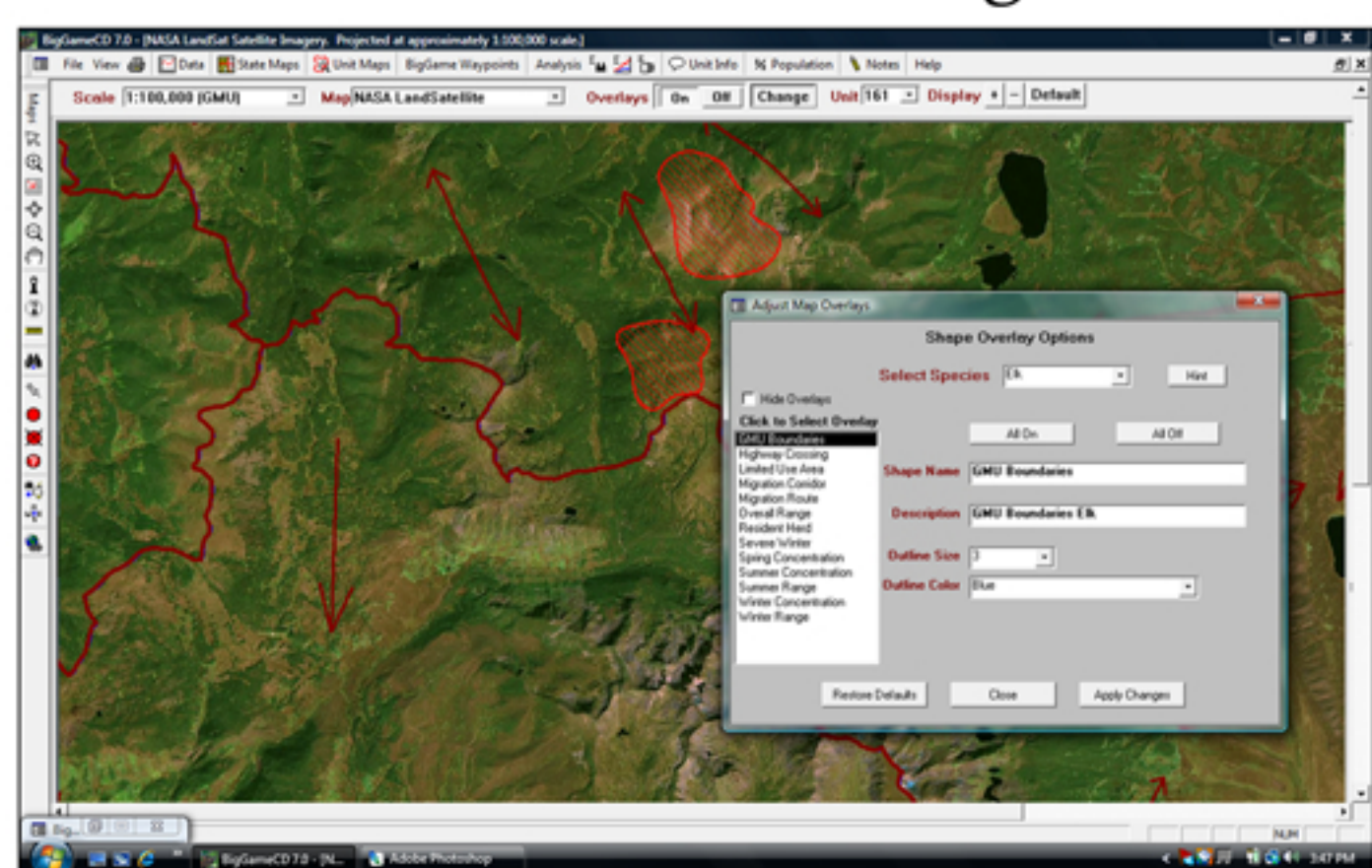
+

Combo Special

BLM (Land Ownership)



NASA Land Satellite Images



USGS Topographical

